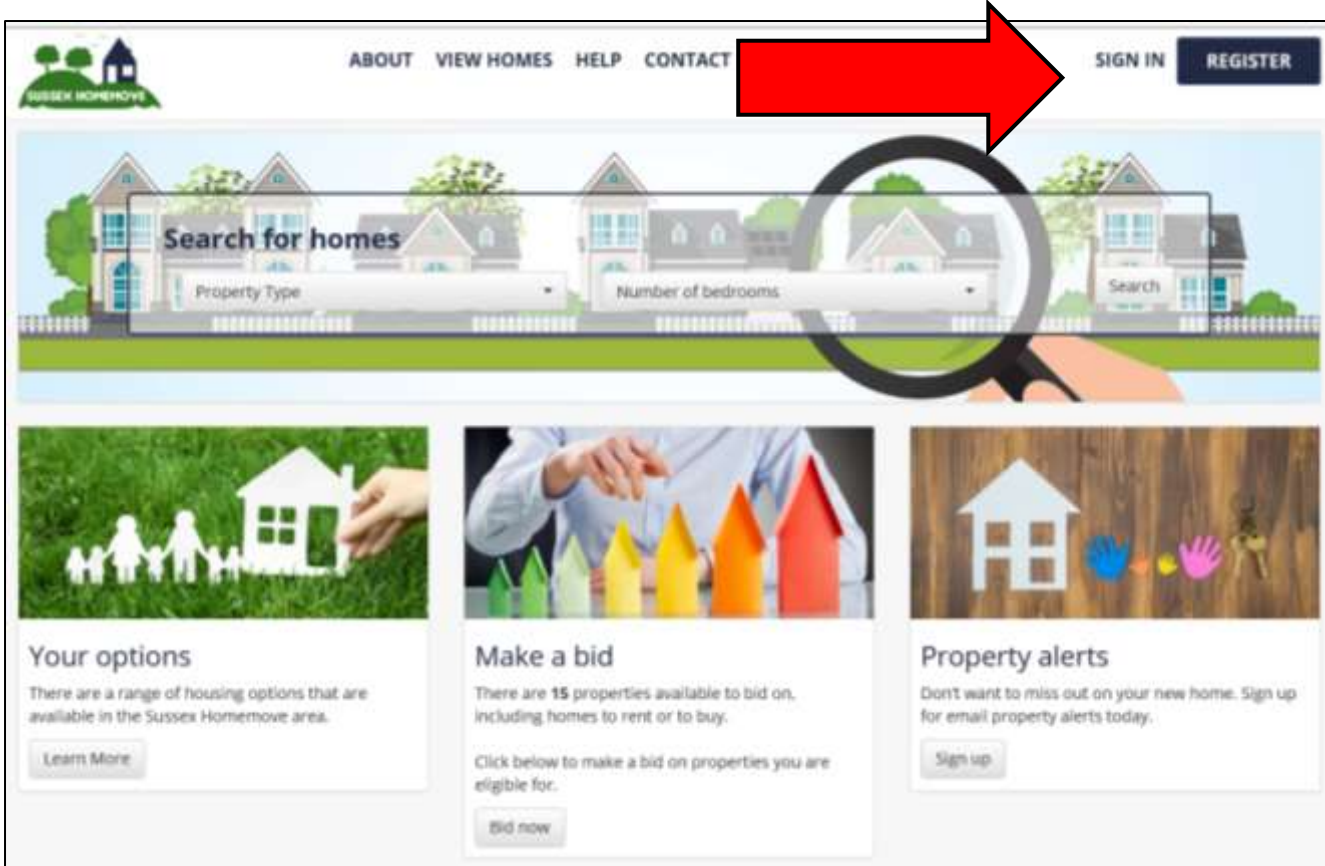


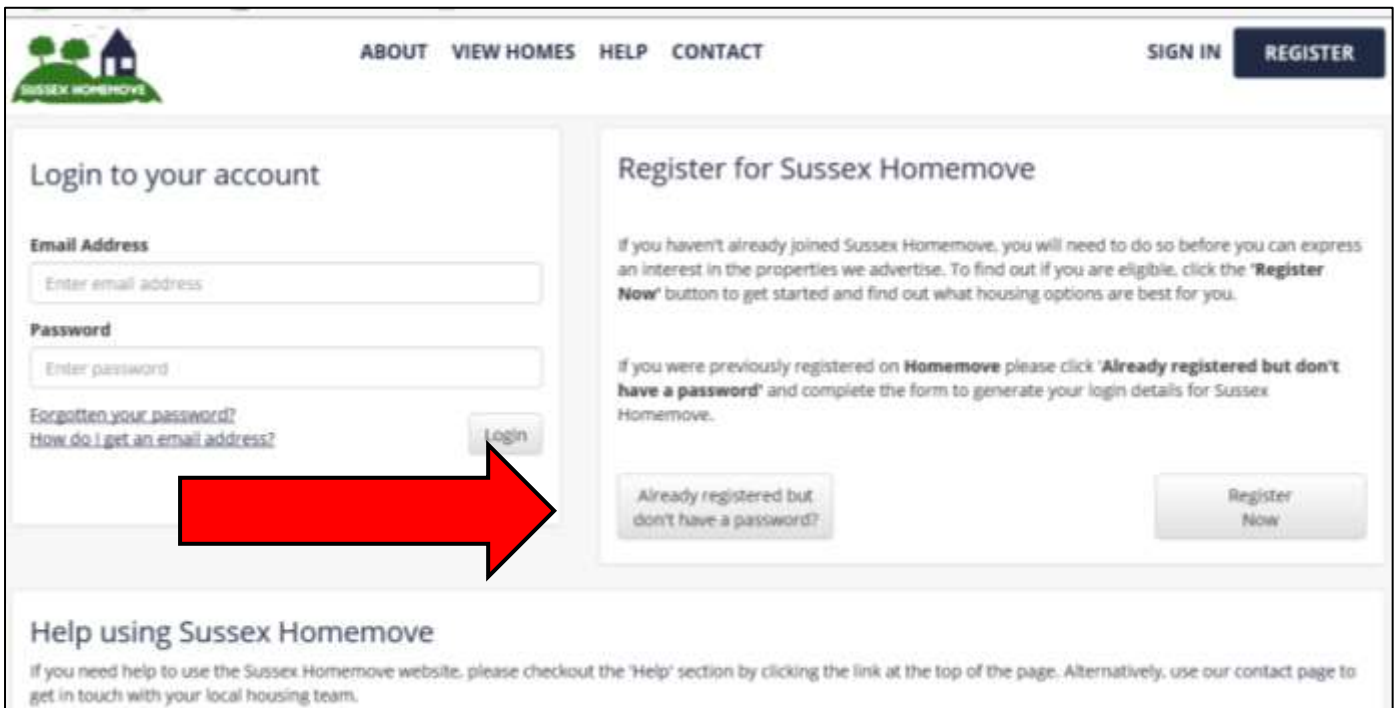
Instructions

Currently registered with Homemove but need to create a new password for Sussex Homemove.

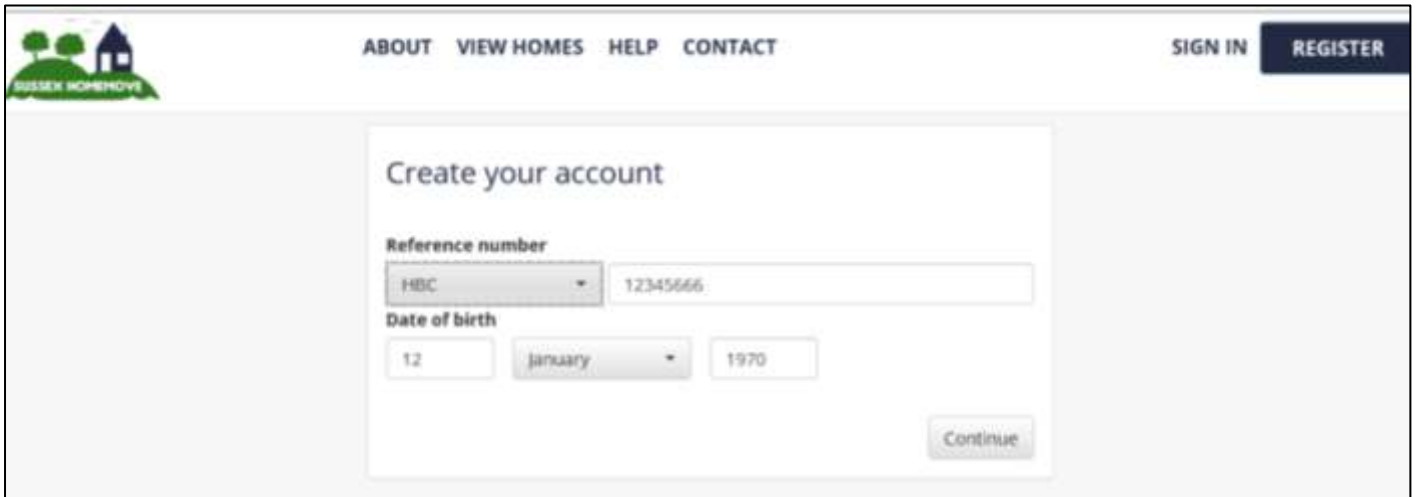
1) Access <https://www.sussexhomemove.org.uk> Click on 'SIGN IN'



2) Click on 'Already registered but don't have a password?'



3) Choose your 'Partner', enter your current homemove number & date of birth and click 'continue'



ABOUT VIEW HOMES HELP CONTACT SIGN IN REGISTER

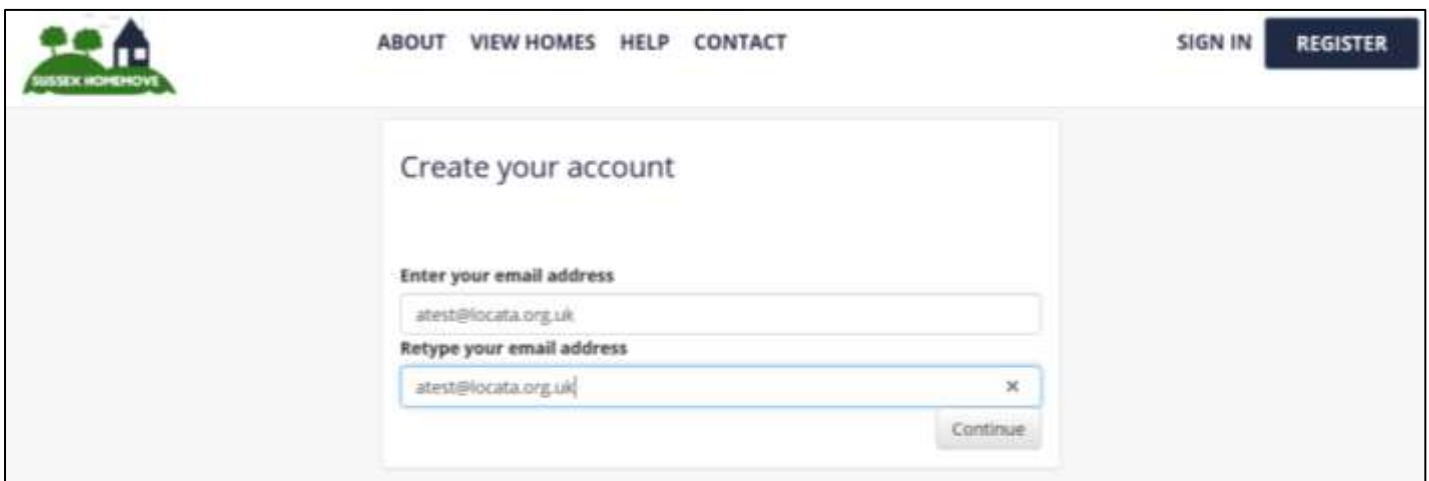
Create your account

Reference number
HBC 12345666

Date of birth
12 January 1970

Continue

4) Add an email address – this needs to be one you can access, you will need to access it to activate your new password. Make sure you type in the same email address in both boxes (case sensitive). Click 'continue'



ABOUT VIEW HOMES HELP CONTACT SIGN IN REGISTER

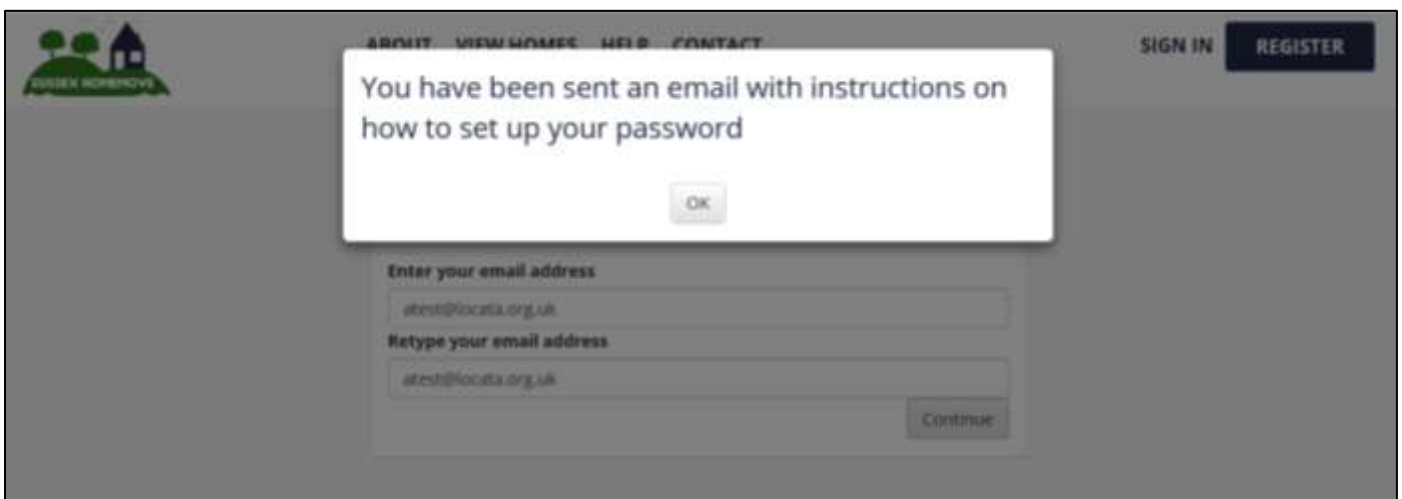
Create your account

Enter your email address
atest@locata.org.uk

Retype your email address
atest@locata.org.uk

Continue

5) The system will send you an email, go to your emails and retrieve email



ABOUT VIEW HOMES HELP CONTACT SIGN IN REGISTER

You have been sent an email with instructions on how to set up your password

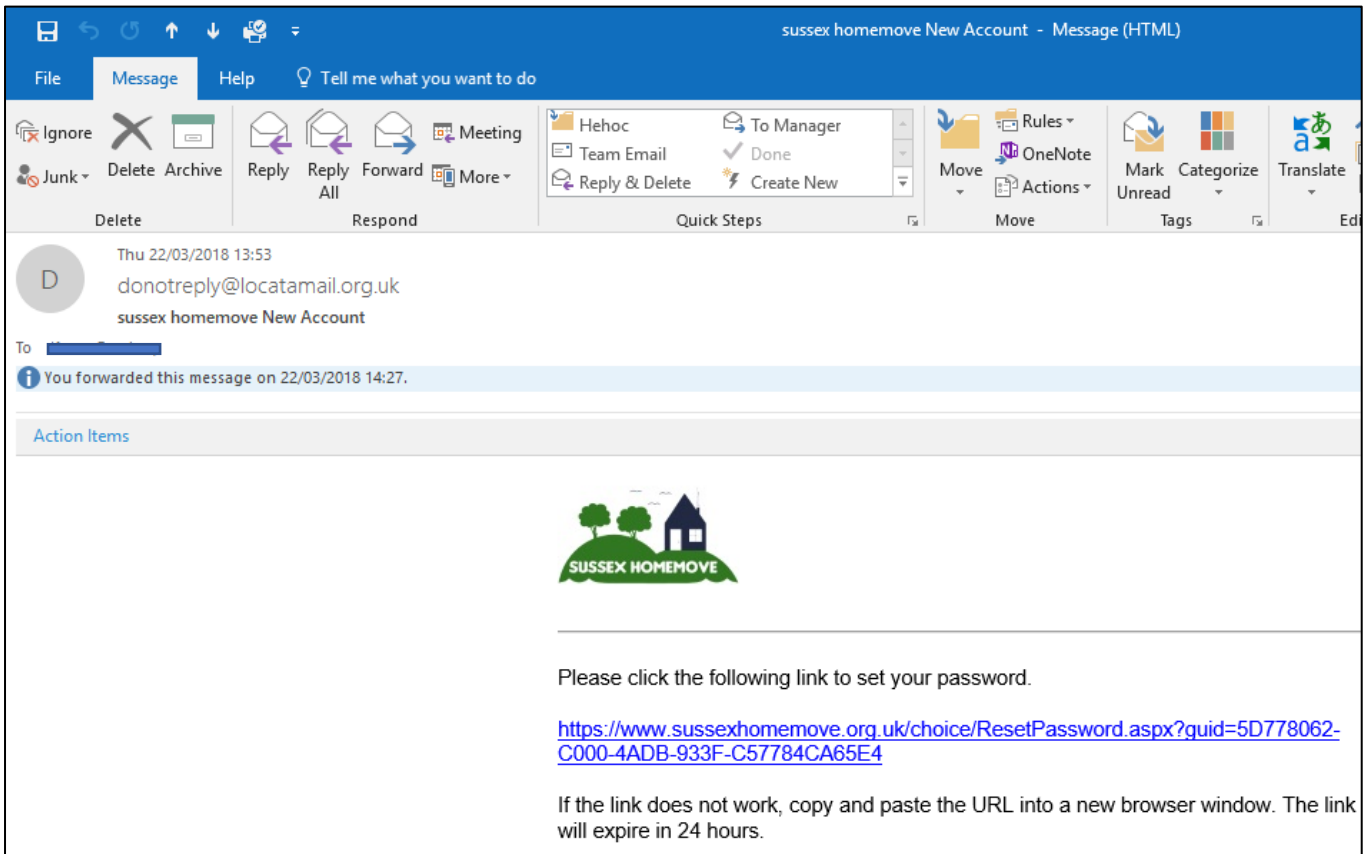
OK

Enter your email address
atest@locata.org.uk

Retype your email address
atest@locata.org.uk

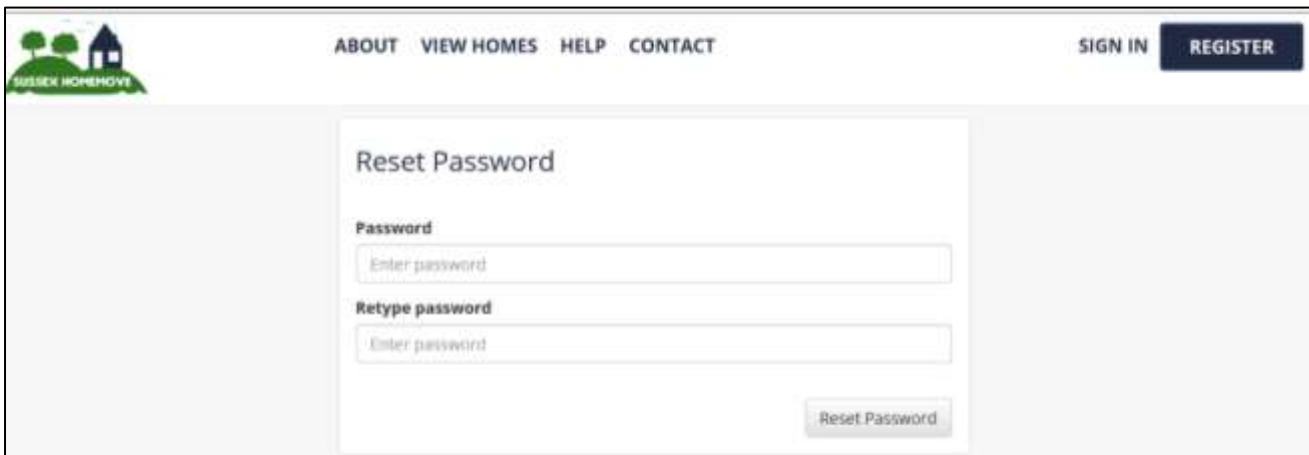
Continue

6) Open email and click on link



The screenshot shows an email client interface. The top bar indicates the email is from 'sussex homemove New Account - Message (HTML)'. The email header shows it was received on 'Thu 22/03/2018 13:53' from 'donotreply@locatamail.org.uk' to 'sussex homemove New Account'. A notification states 'You forwarded this message on 22/03/2018 14:27'. The main content area features the 'SUSSEX HOME MOVE' logo and a message: 'Please click the following link to set your password.' followed by the URL: <https://www.sussexhomemove.org.uk/choice/ResetPassword.aspx?guid=5D778062-C000-4ADB-933F-C57784CA65E4>. A note at the bottom states: 'If the link does not work, copy and paste the URL into a new browser window. The link will expire in 24 hours.'

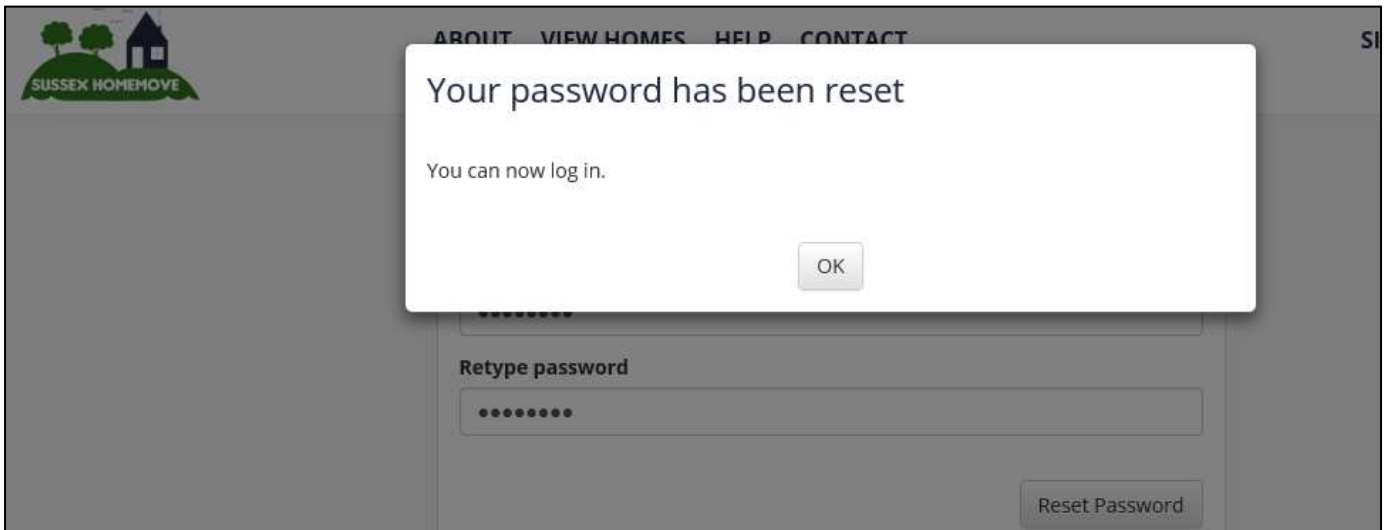
7) Set up a password, please take care to choose something that you won't forget. (You will need to remember each time you want to place a bid)



The screenshot shows the 'Reset Password' form on the Sussex Home Move website. The form includes the following elements:

- Navigation links: ABOUT, VIEW HOMES, HELP, CONTACT, SIGN IN, REGISTER
- Form title: Reset Password
- Input field for Password: Enter password
- Input field for Retype password: Enter password
- Reset Password button

8) Yay!



9) Go back to login to your account and use email (the one you used to get a password) and new password (the one you have just created) to log in. You should now be able see your account and bid on properties you are eligible for.

